



SERVIZIO SANITARIO REGIONALE
EMILIA-ROMAGNA
Azienda Unità Sanitaria Locale di Reggio Emilia
IRCCS Istituto in tecnologie avanzate e modelli assistenziali in oncologia

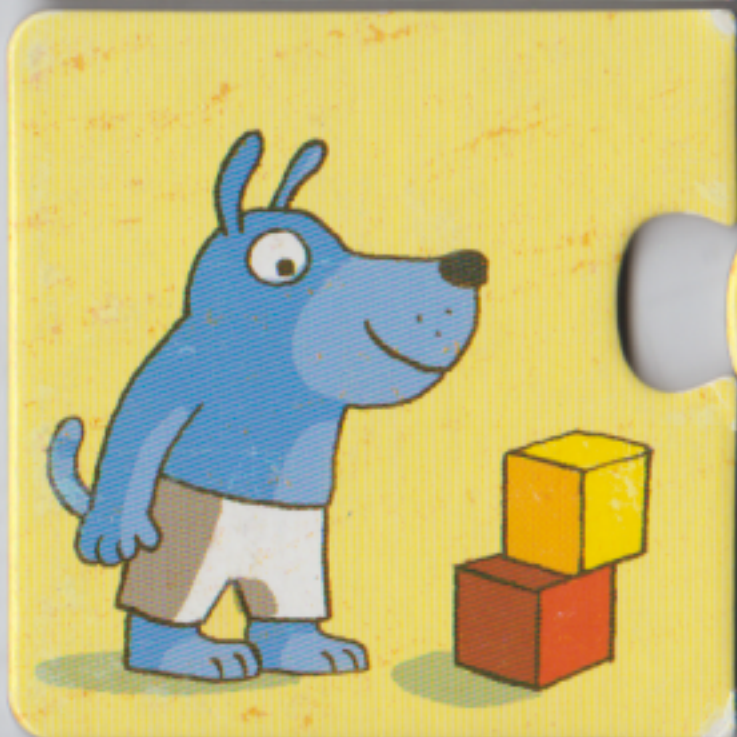


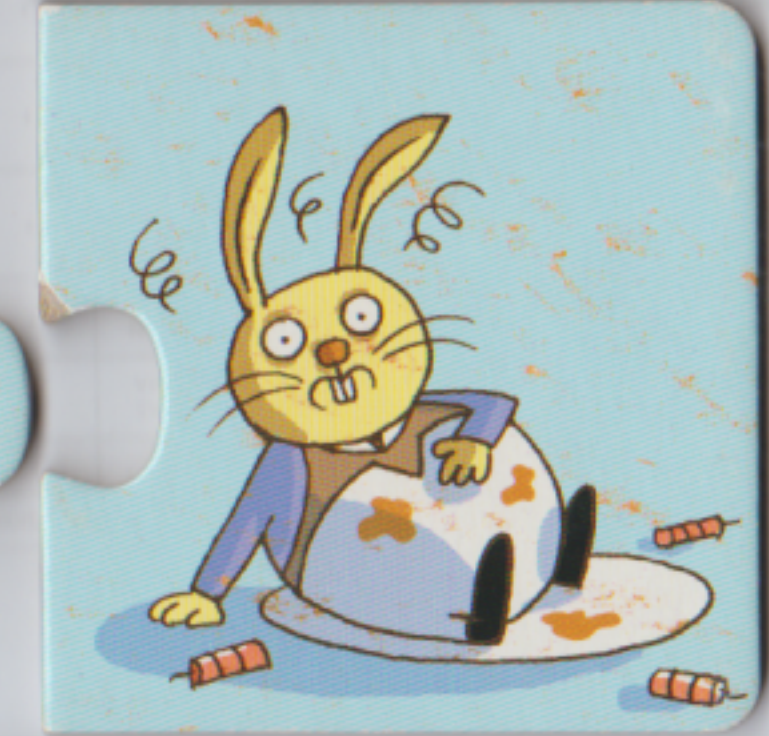
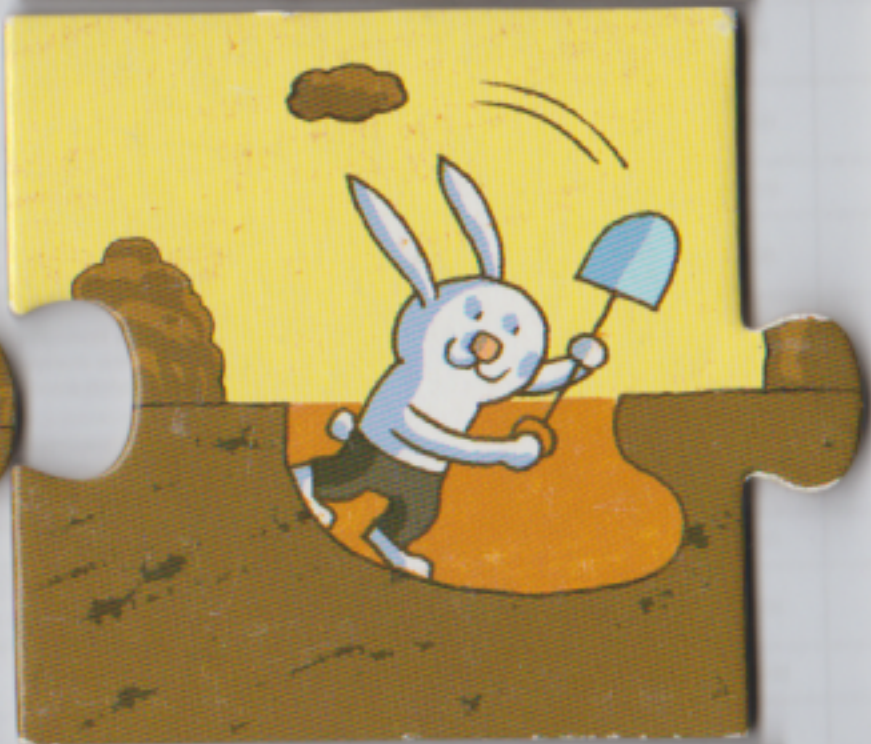
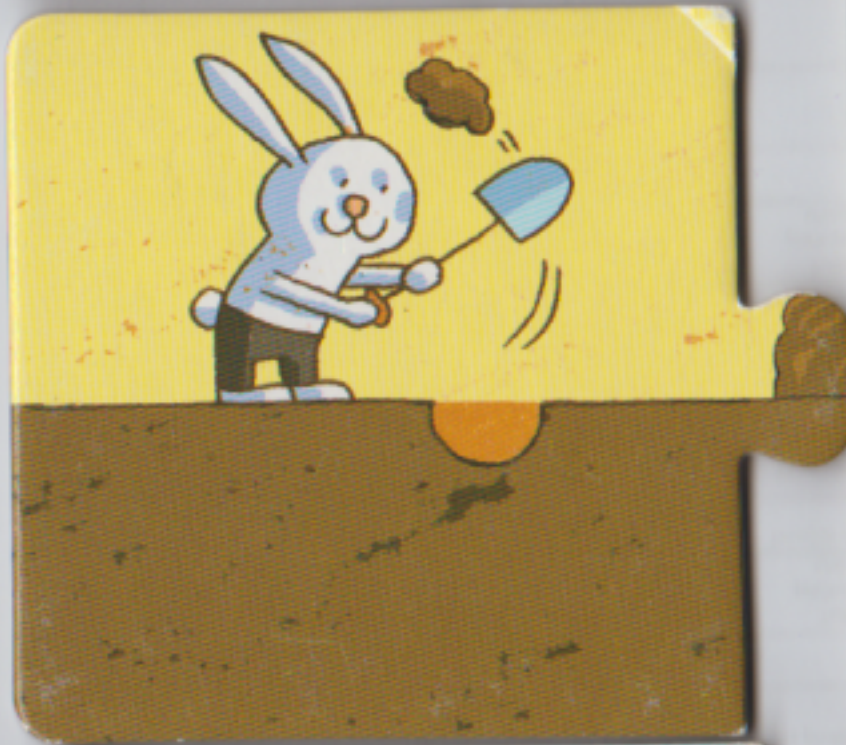
Dipartimento di Salute Mentale e Dipendenze Patologiche

Struttura Operativa Complessa di
NEUROPSICHIATRIA dell'INFANZIA e ADOLESCENZA
Programma Autismo
Centro Autismo

METTI IN ORDINE LA SEQUENZA E LEGGILA CON I SIMBOLI CAA

Ritagliate tutte le tesserine del puzzle.
Il bimbo dovrà trovare le tre tesserine corrispondenti alla stessa storia,
riordinarle e leggerle, se necessario, con i simboli CAA.



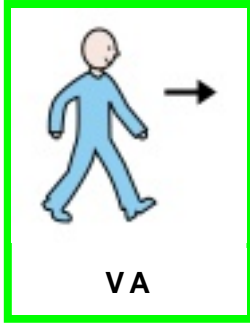




IL



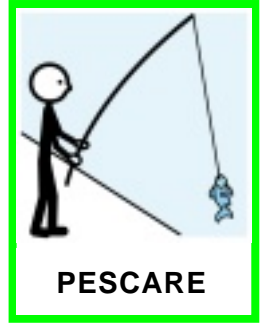
GATTO



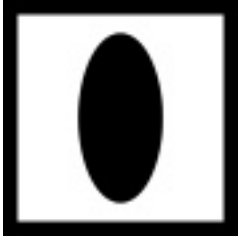
VA

a

A



PESCARÈ



UN



PESCE



HA



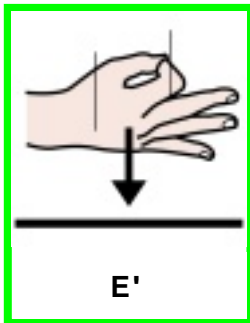
ABBOCCATO



il



GATTO



E'



ARRABBIATO



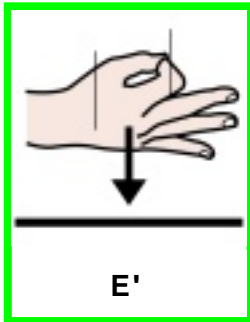
PERCHÈ



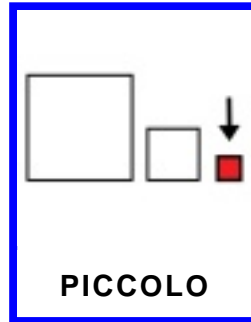
IL



PESCE



E'



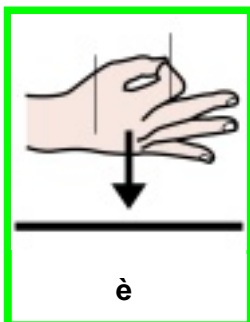
PICCOLO



IL



CANE



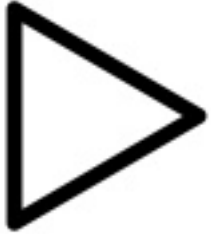
è



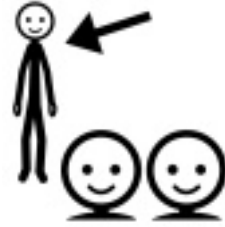
TUTTO



SPORCO



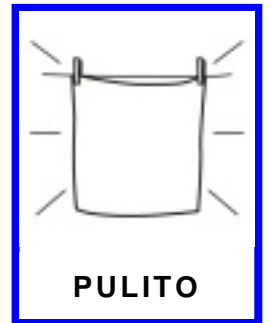
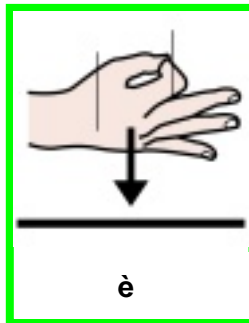
IL



SI



IL



IL



CON

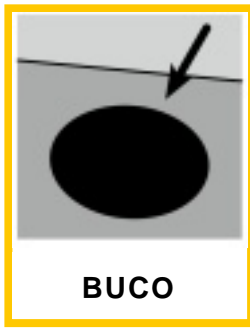


LA

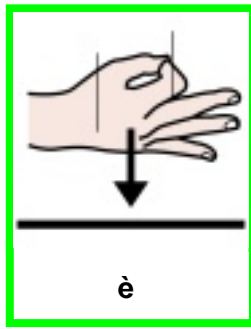




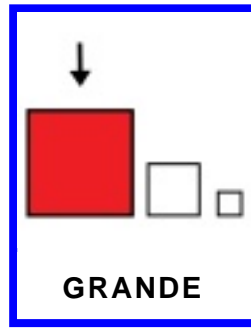
IL



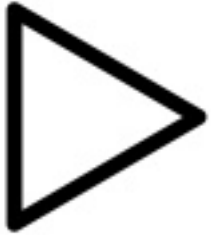
BUCO



è



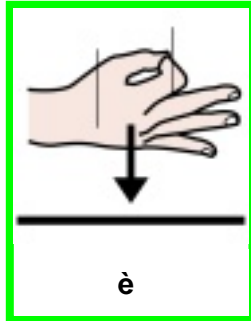
GRANDE



IL



CONIGLIO



è



STANCO



E



DORME



SSSSSC



IL



CONIGLIO



VEDE



LA



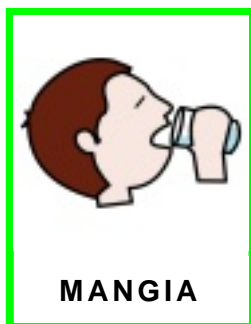
TORTA



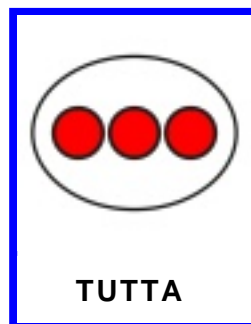
IL



CONIGLIO



MANGIA



TUTTA



LA



TORTA



IL



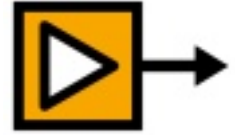
CONIGLIO



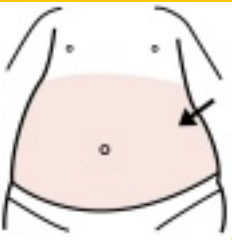
HA



MALE



ALLA



PANCIA



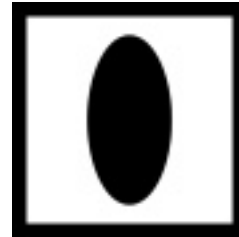
IL



GATTO



VEDE



UN



GOMITOLO



IL



GATTO



GIOCA



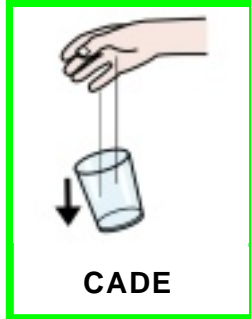
CON



IL



IL



IL



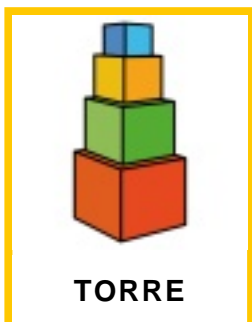
CON



I



LA





IL



CANE



SCAPPA



SPAVENTATO